

T H E  I A M

A black and white photograph of a river scene. In the foreground, a long, narrow boat with a canopy is moving across the water, leaving a white wake. In the background, a cityscape is visible along the riverbank, featuring a prominent building with a dome and a spire. The sky is overcast with soft clouds.

RIVERSIDE
RETREAT

A close-up, black and white photograph of several lotus buds. The buds are tightly packed and covered in water droplets, giving them a glistening appearance. They are nestled within the dark, layered petals of the lotus flower.

THAI TASTES &
TRADITIONS

Along the River of Kings, nestled amongst Bangkok's historical palaces, temples and museums, a lucky few will happen upon our boutique gem, The Siam. Set on 2.8 acres of premium river frontage, our privately owned and operated 39-room luxury retreat will transport you to a bygone serenity suffuse with priceless antiquities, oriental allure and contemporary comforts.

Conceived by Krissada Sukosol Clapp and globally acclaimed architect and designer Bill Bensley, The Siam features Thailand's most spacious suites and is the kingdom's premier urban resort offering intimately private pool villas with open-air roof terraces.

For an unforgettably unique experience, relish the exclusivity of dining or staying in one of four traditional Thai teakwood houses sourced by Jim Thompson for socialite pal Connie Mangskau; in which she hosted an array of cosmopolitan characters like Jacqueline Kennedy, Henry Ford, John Rockefeller and Roger Moore.

An irresistible array of bespoke cultural amusements await you at The Siam: explore Bangkok by boat from our private pier; indulge in pampering at our seductive spa; explore the grounds and discover a veritable treasure trove of curios or simply unwind with a sunset cocktail at our riverfront bar. Whatever your desire, we await you with delight...



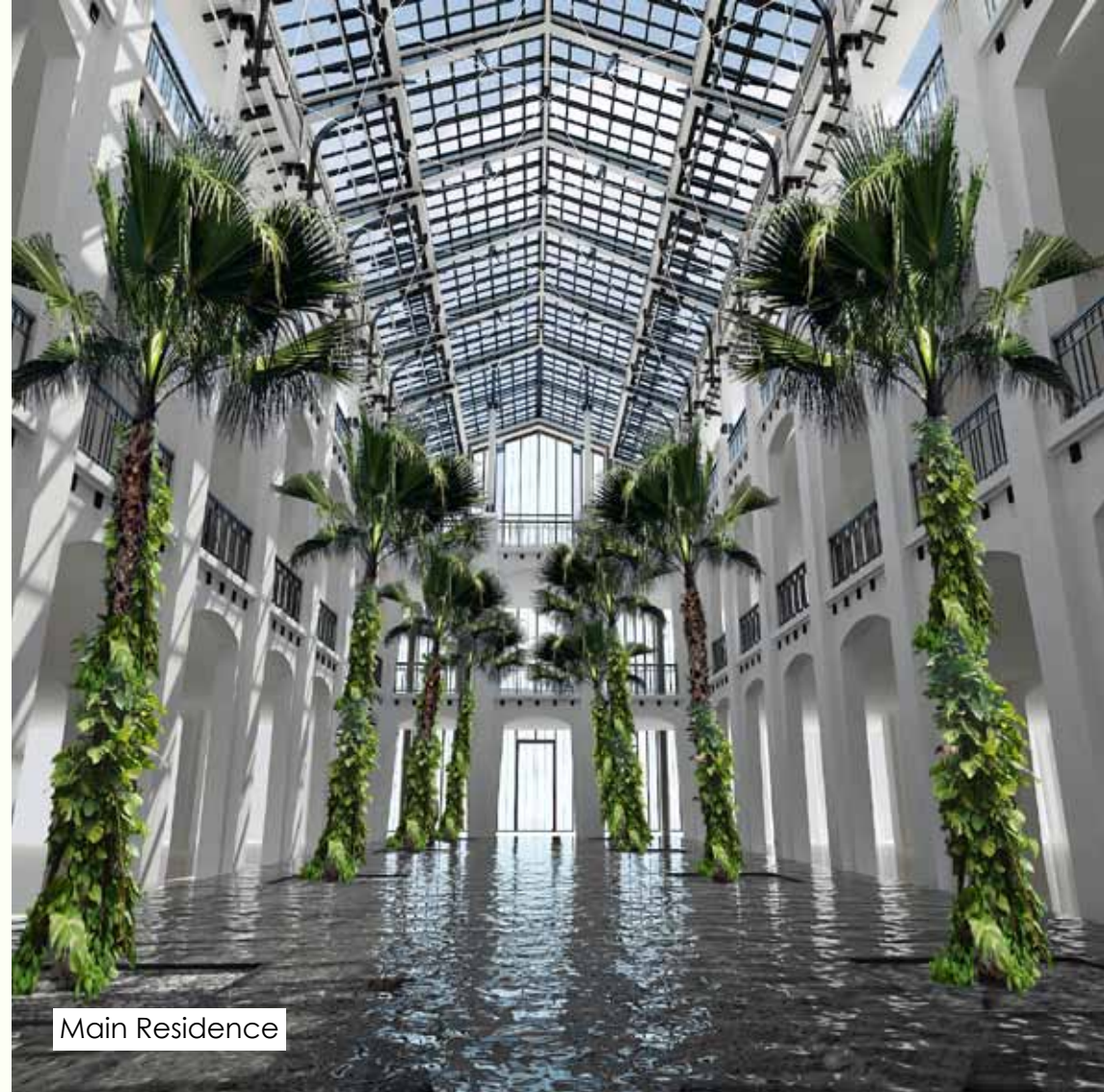
DESIGN

The Siam was conceived by creative director and celebrity Krissada Sukosol Clapp, together with globally acclaimed architect and interior/landscape designer Bill Bensley, one of *Architectural Digest's* 'Top 100 Designers and Most Creative People' in 2009.

When Krissada inherited a piece of prime riverside land, he was instantly inspired to build a hotel there to house his substantial collection of antiques. Knowing the property had to stand out he brought Bill Bensley on board. Kriss explains, 'Bill is entirely original. This shines through in all of his projects, they have character. I love distinct details. Bill and his team understand exactly how to pull these together into a larger work of art.'

With art in mind for the Main Residence, lead architect Ouant drew inspiration from Paris' Musée d'Orsay, stating that "My work is an expression of how I wish the world could be: serene, lush in natural beauty, yet quite simple." To emphasise this, a muted colour scheme of black, white, cream, grey and neutrals have been combined with natural textures such as wood, weave, leather and stone, not to mention sprawling gardens and verdant shrubs throughout.

The overall setting reflects the period of Bangkok's greatest grandeur, under King Rama V (circa 1853-1910), with Art Deco accents. Of The Siam, Bill says: 'My studio team has designed some 150 plus hotels and resorts worldwide and we have received many accolades. But I am most excited about The Siam, as I know it is going to turn heads on the competitive hospitality market of tomorrow'.



Main Residence

ROOMS

The Siam is an all-suite property featuring 39 of the Kingdom's most spacious rooms, all outfitted with plush furnishings, super-sized king beds and lofty ceilings. Each room has been individually designed with original turn of the century oriental artwork and antiques. In addition, to make your stay as relaxing and carefree as possible, each room is catered for by a personal butler.

SUITES

Choose from 16 Siam or 12 Mae Nam Suites located in the Main Residence, adjacent to the spa and with convenient access to our gym, library and meeting room. Each Siam Suite features a colonial-style internal verandah, ideal for leisurely breakfasts or afternoon tea; whilst our Mae Nam Suites afford the most fabulous river views imaginable and come furnished with supplementary double sofa beds for families.

VILLAS

Retreat to an intimately private Pool Villa and bask in either Thai, Chinese or Colonial surrounds. Every villa is awash with lush internal gardens and features a private swimming pool and open-air roof terrace, perfect for private sunbathing, evening cocktails or tête-à-tête dining.

THAI HOUSE

For the ultimate in memorable experiences, succumb to the Siamese charm of our largest abode, Connie's Cottage. This unique teakwood house was brought to Bangkok by Jim Thompson from the ancient capital of Ayutthaya for his socialite friend and fellow curio collector Connie Mangskau. Today it has been totally refurbished and equipped with the finest in modern comforts whilst keeping its distinctive charm.



Pool Villa



Siam Suite



Pool Villa



Siam Suite



Mae Nam Suite





FACILITIES

DINING

Thai restaurant and cooking school
Deco bar and eatery
Tea room
Bathers bar

WELLBEING

Gym with outdoor yoga terrace
Spa with bath house, steam and sauna
Riverside infinity pool with Jacuzzi beds
Children's splash pool
Hair and nail salon

VENUES

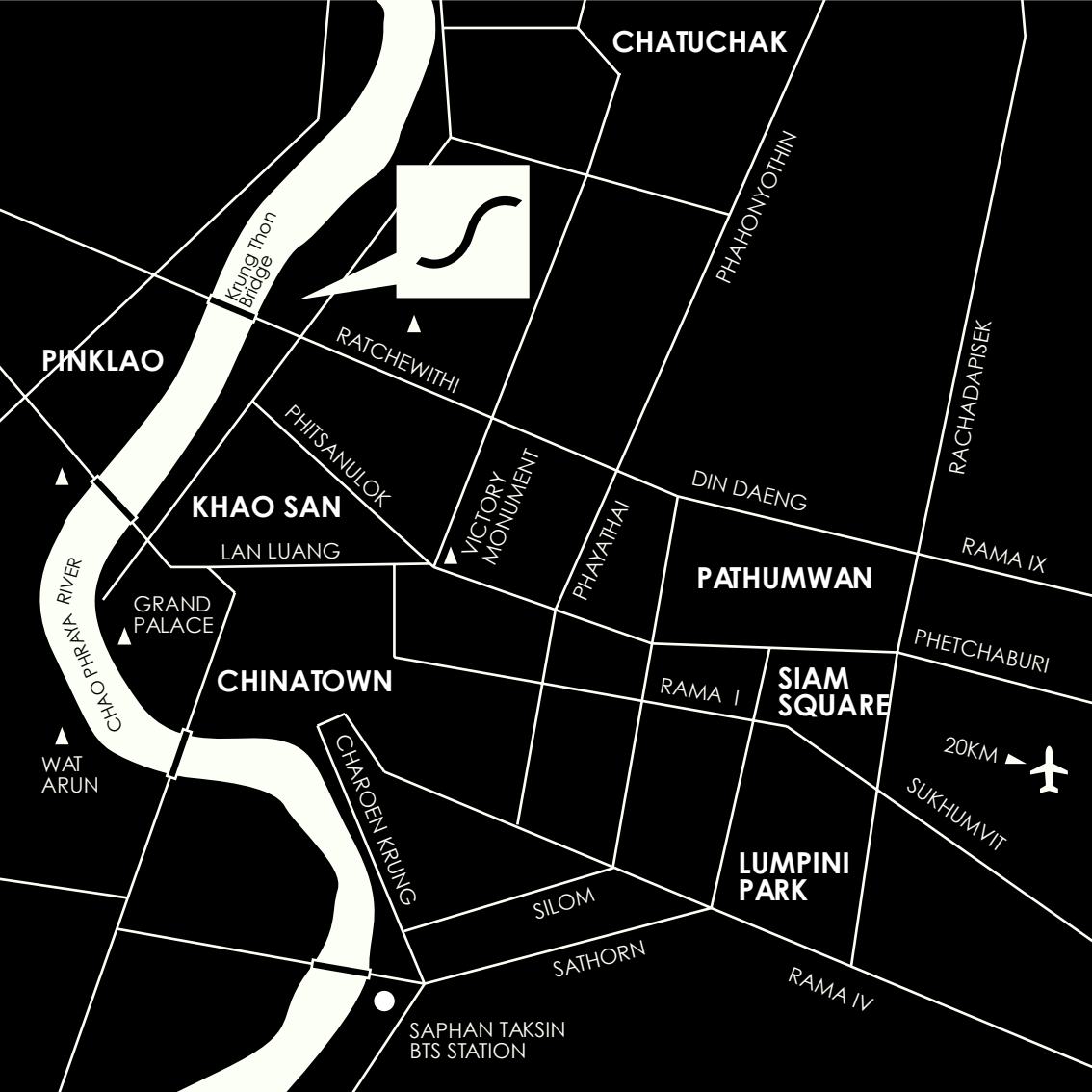
Library and screening room
Conservatory and roof garden
Riverfront lawn
Tea garden and deck

BOUTIQUES

Antique gift shop
Art gallery

TRANSPORT

Private pier with Thai barge and luxury speedboat
Limousine service
Underground parking



LOCATION & EXPLORATION

The Siam is located on the Bangkok side of the Chao Phraya River, at the base of Krung Thon Bridge in historic Dusit district. This is the area wherein lie all of Bangkok's must-see cultural sights. Vimanmek Teak Palace Museum and Dusit Zoo are 5 minutes off by car and a boat ride to the Grand Palace is just 15 minutes. Suvarnabhumi airport is reached in a smooth 45-minute limousine ride and the city's main shopping artery, down-town Siam Square, is just 20 minutes away. To beat Bangkok's traffic, simply hop aboard our luxury speedboat to the BTS skytrain at Taksin bridge, just 15 minutes downriver. Why not view the splendour of the Royal Barge Museum en route!

UNIQUE CULTURAL EXPERIENCES

At The Siam, prepare to be treated to a cultural experience like no other, with sublime service and the river as a focal point of your stay. Re-discover the bliss of life in the slower lane; allow our concierge to customise the Thai journey of your dreams...

Why not try our 'Bangkok by Boat' private barge tour, revealing the City of Angel's ancient beginnings and Koh Kret Island (famous for its pottery), or perhaps sail off for a round of golf upriver. Take your pick of Bangkok's most beautiful buildings and enchanting exhibits with our 'Museums & Mansions' personal guided tour.

NEARBY ATTRACTIONS

Bangkok Art and Culture Centre (BACC)
 Bangkok Folk Museum
 Chatuchak Weekend Market
 Chinatown
 Dusit Zoo
 Giant Swing
 Golden Mount
 Grand Palace
 Jim Thompson's House
 Khao San Road
 Little India Textile Market

Museum of Siam
 National Museum
 Pak Khlong Flower Market
 Phra Athit Road & Phra Sumen Fort
 River City Antiques Mall
 Royal Barge Museum
 Temple of Dawn
 Temple of the Emerald Buddha
 Temple of the Reclining Buddha
 Vimanmek Teak Palace
 Wat Suthat



ABOUT THE OWNERS & MANAGEMENT

Fondly dubbed the 'musical hoteliers' of Thailand, the Sukosol family are a multi-lingual, multi-tasking, multi-skilled, multi-talented business dynasty. Since our illustrious leader, Kamala, started it all 30 years ago, we have sojourned in a smorgasbord of establishments: from homely abodes to private palaces. What inspires us most is the perfect balance of individuality, gracious service, cultural charm and a sense of serendipity. And we believe you will find that right here with us at The Siam.

THE OWNERS & MANAGEMENT

Kamala Sukosol (centre) Our stellar team is headed by matriarch and 2009 *Forbes Asia's* 'Hero of Philanthropy', Kamala Sukosol; president of Siam Hotels & Resorts. Proceeds from her annual concerts and dozens of singing albums have benefitted needy charities to the tune of 28 million Baht. Kamala believes business IS pleasure: 'We must be passionate about what we do and do it with love, integrity and sincerity'.

Marisa Sukosol Nunbhakdi (far left) Our executive vice president oversees the Siam Group's marketing, management and development. Like her formidable mother, Marisa is also a renowned vocalist and recording artist in her own right. Despite the pressures of these two demanding loves, she still finds time to be a public speaker, UNICEF ambassador and inspirational author.

Darane Sukosol Clapp (far right) Daranee is the chief financial officer and vice president of our affiliated real estate and trading companies. With her background as a Wall Street investment banker, The Siam is in secure hands. Daranee is also a regular feature and MC at Sukosol family concerts.

Sukie Clapp (centre left) Our Sukie wears many hats: he is The Siam's project director, a media entrepreneur and a passionate biker! To date he has founded Thailand's most successful independent record label, Bakery Music, published a book and produced/starred in the hugely successful reality TV series *Dream Chaser*. Since finding fresh fame on Facebook as an intrepid street photographer, Sukie has turned his lens to capture the spirit of The Siam for our website.

Krissada Sukosol Clapp (centre right) Creative Director Kriss is a famous rock singer and film actor (not to mention anthropology major!) who has an exquisite eye for detail. As lead vocalist of indie-rock band PRU he won MTV Asia's award for Favourite Thai Artist in 2001 and scooped Thailand's equivalent Oscar for Best Actor in 2006, for his lead role in the thriller *13*. The Siam is his lifelong dream come true and the perfect venue to showcase his beloved antiques!

CONTACT

For all enquiries, kindly contact

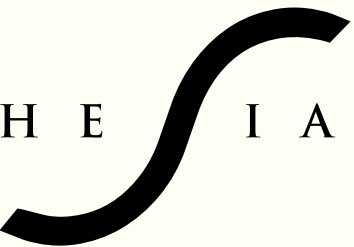
Melanie Giles-Clapp
Marketing & Development Director

melanie@siamhotels.com
T +66 (0) 2247-0123
F +66 (0) 2245-5127
www.thesiamhotel.com

Pre-Opening Office
c/o Siam City Hotel
477 Si Ayuthaya Road
Phayathai
Bangkok, 10400
Thailand

The Siam
Thanon Khao
Vachirapayabal
Dusit
Bangkok, 10300
Thailand



T H E  I A M



sh.com

WWW.THESIAMHOTEL.COM