



THE SIAM CITY HOTEL | BANGKOK



Embrace City Life, Engage the Senses

Embrace City Life, Engage the Senses

OVERVIEW

A uniquely Thai hotel situated in the heart of Bangkok at Phayathai Skytrain Station across the road from the new Airport Rail Link. Inspired by the exceptional traditions of Thai hospitality, King Rama V colonial-era refinement blend effortlessly with smart contemporary designs and modern technology to ensure true comfort. Enjoy ubiquitous Wi-Fi connectivity, the ultimate spa experience, a captivating executive Club Lounge and the city's finest restaurants.

LOCATION

- In the heart of Bangkok's shopping, cultural and business centres
- Across from Skytrain (BTS) Phayathai Station with fast access to all areas of the city
- 2 Skytrain stops (5 mins.) from popular shopping in Siam Square, Siam Paragon and MBK
- New Airport Rail Link across from hotel, express transfers to Suvarnabhumi Airport just 15 minutes
- Short taxi ride to the magnificent Grand Palace and the city's most popular historical sites
- Downtown Duty Free Mall directly behind the hotel
- Quick access to Chatuchak Weekend Market via Skytrain
- Suvarnabhumi Airport just 30 minutes away by car (35 kms.)

AREA ATTRACTIONS

- MBK, Siam Paragon, Central World (2 Skytrain stops)
- Pratunam Day Market (10 mins. by car)
- Chatuchak Weekend Market (5 Skytrain stops)
- Suan Pakkard Palace Museum (opposite hotel)
- The Grand Palace (15 mins. by car)
- Marble Temple (10 mins. by car)
- Jim Thompson's Thai House (3 Skytrain stops)
- Phayathai Palace (10 mins. by car)
- Vimarnmek Teak Palace & Anandasamakom Throne Hall (15 mins. by car)
- Patpong and Kaosarn Road Night Markets (20 mins. by car)

HOTEL'S UNIQUE FEATURES - AN ARTISTIC ENVIRONMENT FOR GUESTS

- Intimate and original, a stylish blend of contemporary designs with exotic Thai touches
- Commissioned works of art and museum-quality antiques reflect Thai history and culture
- Charming colonial style Garden Pavilion with garden courtyard and ponds
- Five award-winning restaurants serve some of the best cuisine in Bangkok
- Full-service spa for ultimate pampering and relaxation
- Club Siam executive club floors for boutique privacy and a host of complimentary privileges





ROOM TYPES

Total: 470 rooms and suites

Ayuthaya Wing

Deluxe Room	171
Family Room	7

Siam Wing

Deluxe Room	198
Family Room	16
Club Siam Deluxe	44
Club Siam Suite	30
Ayuthaya & Sukhothai Grand Suites	2

GUEST ROOM FACILITIES

- Wired and Wi-Fi internet connectivity in all rooms
- Electronic key-lock on doors
- LCD/ flat screen TV with satellite and cable channels
- In-room coffee and tea
- 24-hour room service
- Complimentary bottled water (2)
- International direct dial telephone
- Electronic personal safe
- Mini-bar
- Hairdryer
- Thai-inspired aromatic bath amenities
- Electricity: 220 volts (transformers available)
- Voice mail



Non-smoking rooms and wheelchair accessible rooms available.



CLUB SIAM - UNIQUELY THAI, BOUTIQUE COMFORT

Alluring designs captivate and world-class services are custom-made to meet guests' needs. Our club floor guests are treated to a host of complimentary privileges and access to a beautifully furnished private lounge. Spacious rooms and suites offer smart contemporary designs, technology and all the conveniences for the modern traveler.

CLUB SIAM PRIVILEGES

- Free internet use
- Private lounge
- Complimentary executive breakfast
- Complimentary daily happy hour cocktails
- All-day coffee, tea and snacks
- Complimentary local calls and daily newspaper
- Private check-in and check-out
- Club concierge and butler service





DINING & ENTERTAINMENT

Patummat Stunning buffet presentations with fabulous food to suite every taste. Light meals and creative selections served in stylish contemporary surroundings.

Primavera Classic Italian and creative Mediterranean cuisine in a romantic setting with a wide selection of wines. Enjoy popular outdoor terrace amid gardens.

Lin-Fa Award-winning legendary Chinese dining in a striking modern setting.

Spice & Rice Superb regional and royal Thai cuisine enjoyed in a charming colonial-style house overlooking the gardens.

Kamon A multi-award winner serving exquisite Japanese cuisine and Teppanyaki with impeccable Kimono service.

City Lounge Live music, cocktails, creative finger food. The perfect place to mingle or enjoy a nightcap before turning in.

Siam City Bakery Café Casual, trendy little eatery for a quick coffee, delicious dessert or tempting snack.

Pool Bar Picturesque and soothing, relax with a cool drink by the sandstone ornamented pool.

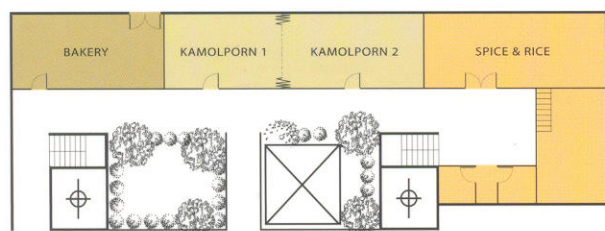
HOTEL SERVICES

- Business Centre
- Wired and Wi-Fi internet connectivity throughout
- Full service spa & gym
- Outdoor pool with massage spa beds
- Hair salon
- Tailor, jeweler, gift shop and newsstand
- Laundry & valet service
- 24-hour in-room dining
- Limousine service & airport transfers
- Tour & travel reservation desk
- 24-hour doctor on call
- Banks and ATMs adjacent to hotel

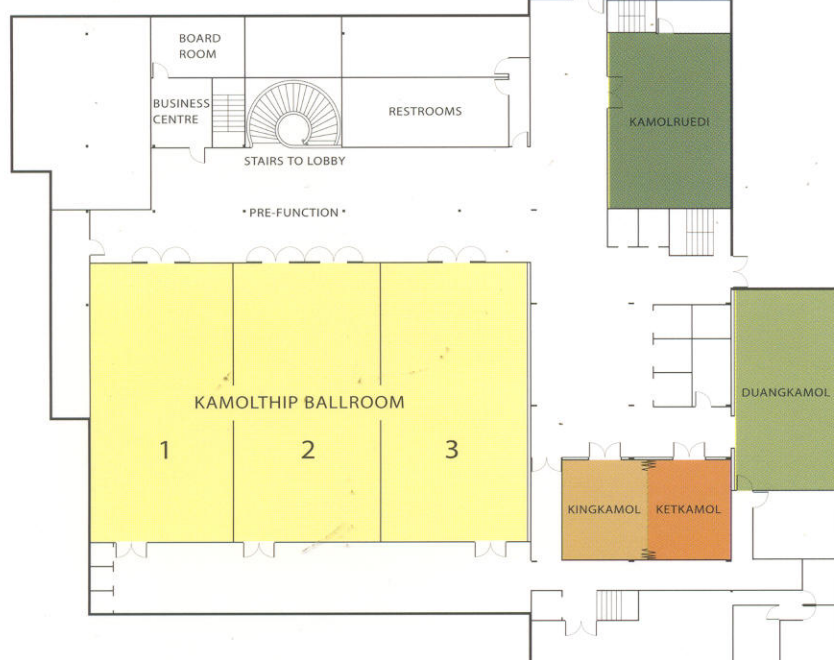
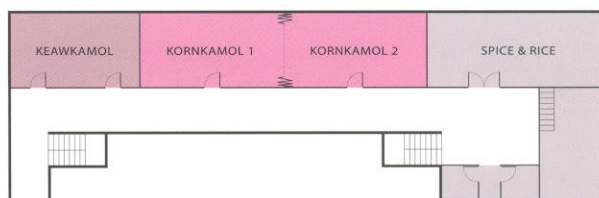
LOTUS SPA OF SIAM

Indulge in a complete range of Thai and European body, bath and beauty treatments provided by trained therapists using only the purest products. Inspired by the lotus blossom, graceful Thai interiors offer quiet serenity. Sumptuous spa suites and treatment rooms, with steam and bath facilities, are ideal for enjoying the spa's signature treatments or any of the luxurious spa packages.

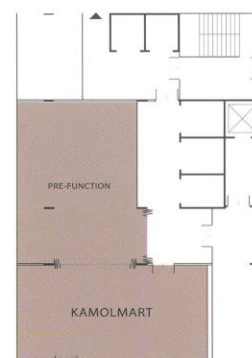
Garden Pavilion 1st Fl.



Garden Pavilion 2nd Fl.



Siam Wing 6th Fl.



VENUES	DIMENSIONS			CAPACITIES			
	Dimensions (m.)	Area (sq. m.)	Ceiling Height (m.)	Theatre	Classroom	Cocktail	Banquet
Kamolthip Ballroom	22 x 33	726	5	800	500	800	600
Room 1	11 x 22	242	5	260	140	200	150
Room 2	11 x 22	242	5	260	140	200	150
Room 3	11 x 22	242	5	260	140	200	150
Kamolruedi	8 x 12.5	100	3.5	72	45	60	50
Duangkamol	7 x 15	105	3.5	96	60	70	80
Kingkamol	5 x 7	35	3.5	30	27	30	30
Ketkamol	6 x 7	42	3.5	40	27	30	30
Kamolmart	7 x 14	98	3.5	90	60	120	80
Kornkamol	5.5 x 22	121	3	137	84	130	100
Kaewkamol	5.5 x 7	38.5	3	39	24	30	30
Kamolporn	5.5 x 22	121	3	137	84	130	100
Rattanakosin	10 x 14	140	8	140	45	130	80



MEETING & CONFERENCE FACILITIES

- ✦ 12 Meeting Rooms
- ✦ 726 sq. m. column-free Kamolthip Ballroom
- ✦ Extensive choice of indoor and outdoor spaces
- ✦ Meeting rooms with natural light overlooking the garden's
- ✦ Board Rooms and Meeting Suites for exclusivity
- ✦ Complete audio visual equipment selection
- ✦ Convention services and technical support staff
- ✦ Dedicated personal events coordinator

THEME PARTIES & OUTSIDE CATERING

- ✦ Elegant facilities for corporate gatherings and private parties
- ✦ Lively themed breakfasts, buffets and gala dinners
- ✦ Creative fun-filled entertainment and decoration choices
- ✦ Garden Pavilion with charming open-air atmosphere
- ✦ Rattanakosin Lounge for elegant colonial period surroundings
- ✦ Outside catering services feature hotel's superb cuisine and service

WEDDINGS

- ✦ Ballroom easily accommodates 800 for cocktail and buffet receptions
- ✦ Chinese banquet facilities for up to 700 guests
- ✦ Personal wedding planning assistance
- ✦ Traditional Thai wedding ceremony arrangements





SALES & RESERVATIONS

SALES OFFICE

477 Si Ayuthaya Road
Phayathai, Bangkok 10400, Thailand
Tel. +66 2247-0123
Fax. +66 2247-0165
E-mail: sales@siamhotels.com

RESERVATIONS OFFICE

Tel. +66 2247-0174
Fax. +66 2642-7948
E-mail: reservations@siamhotels.com

GDS ACCESS CODES

Amadeus	WV	BKKSCH
Galileo	WV	21601
Sabre	WV	21529
Worldspan	WV	BKKSC

WEBSITE

www.siamhotels.com




**Member of
Green Leaf Hotels**


Siam City Hotel
BANGKOK

★★★★★
Officially recognized with the
highest award in Thai hospitality

477 Si Ayuthaya Road, Phayathai, Bangkok 10400, Thailand  Skytrain Phayathai Station
Tel. +66 2247-0123, Fax. +66 2247-0165, E-mail: siamcity@siamhotels.com

A member of Siam City Hotels & Resorts

The Siam City Hotel, Bangkok • Siam Bayshore Resort & Spa, Pattaya • Siam Bayview Hotel, Pattaya

www.siamhotels.com